



640 Old Stage Road | Homesite HC 33

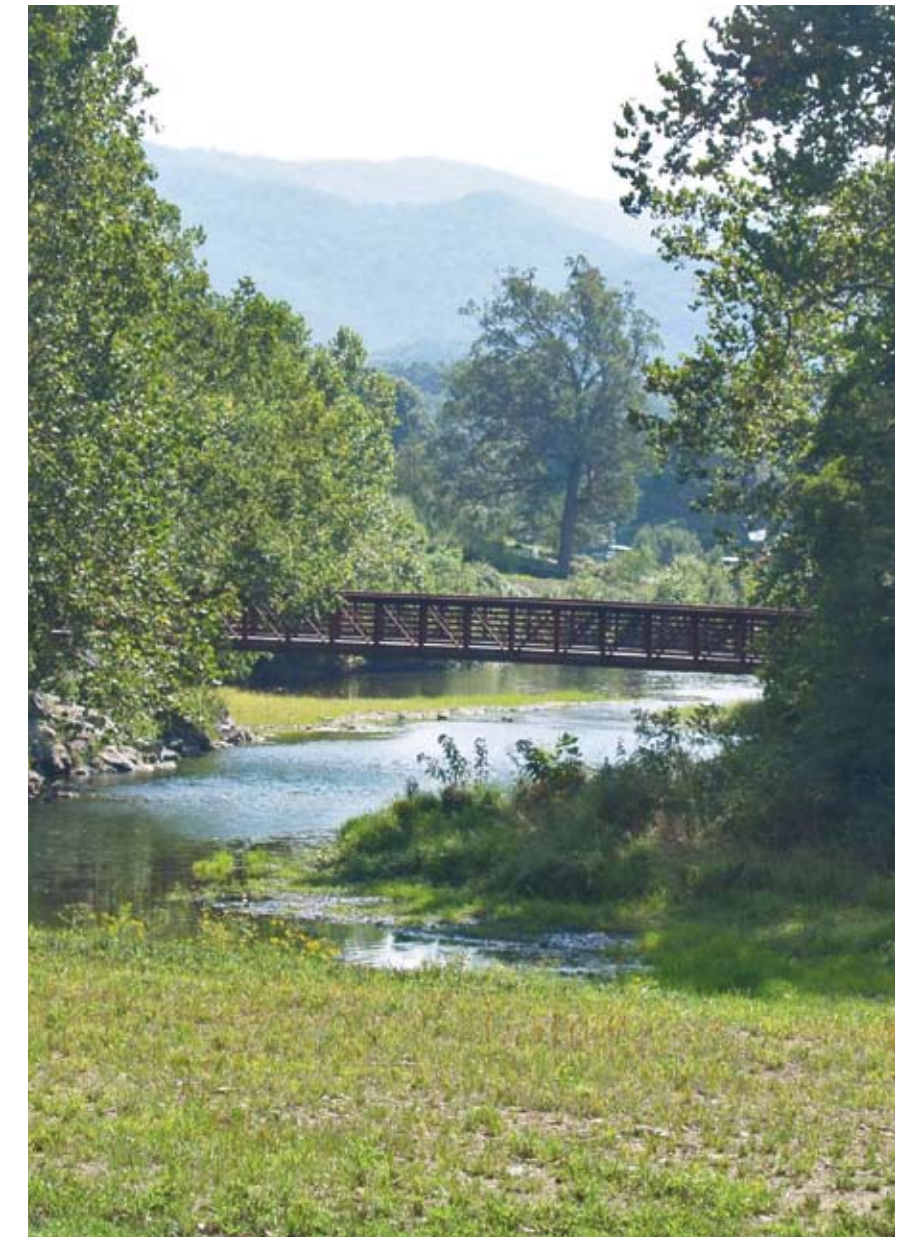
An elegant mountain cottage with Howard's creek and Old White golf course views within walking distance of The Greenbrier.

THE GREENBRIER
SPORTING CLUB



This charming mountain cottage is part of a village of just 44 homes within walking distance of the hotel amenities, fishing and golf.

- This four-bedroom retreat offers 3,957 square feet of gracious living space and fine architectural details including board and batten siding, cedar shake roof and Brazilian cherry, slate and marble floors.
- Opportunities for outdoor entertaining abound with a front porch, back screened porch and Ipe deck with beautiful fairway, creek and mountain views.
- The expansive great room has an attractive fireplace and hearth, 10-foot ceilings, French door access to the rear porch.
- The gourmet kitchen with airy breakfast room has access to the rear porch, Asko, Sub-Zero and Wolf appliances and opens to a convenient mudroom.
- A first floor master suite has an expansive bath with marble shower and vanities (his and hers), a walk-in closet and direct screened porch access.
- The second level has an additional master suite and two guest suites with marble vanities.
- The home is pre-wired for both sound and security systems.



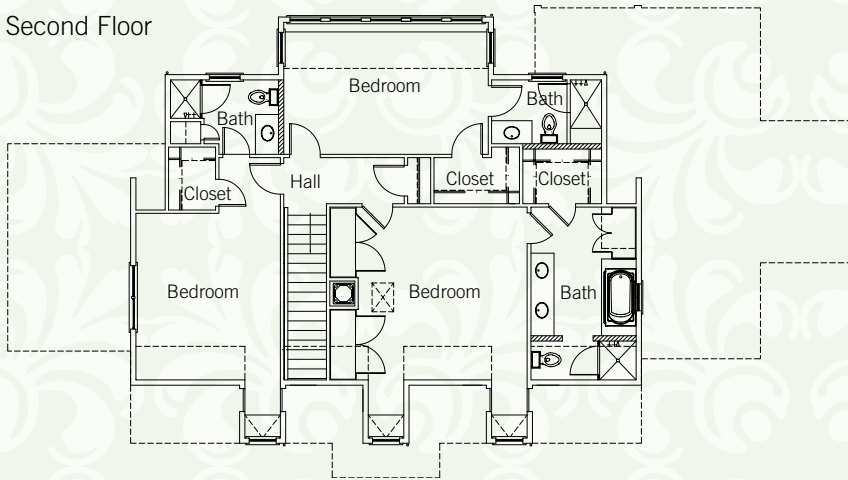
INTERNATIONAL
Sporting Club
 COLLECTION



First Floor



Second Floor



DPS Sporting Club Development Company, LLC

Renderings and floor plans are for illustrative purposes only and may vary from actual design specifications and completed home. 1206



843.266.2137 www.dpsdevelopment.com